

RESULTS OF OPERATIONS
Semi Annual Exploration Report
OYADAO SOUTH CONCESSION, CAMBODIA,
FOR THE PERIOD 2011:07:01 TO 2011:12:31

INTRODUCTION

The period started slowly, with mostly office work collating and interpreting the data from field mapping and sampling over the previous semester. Sustained field activity only commenced again in December. Figure 1 depicts the location of the concession in Cambodia.



The Project is located 450 km northeast of the national capital city of Phnom Penh in the Province of Ratanakiri, the Provincial capital of which is Banlung. The concession is irregular in shape, and lies to the south of a contiguous block, Oyadao, to the east of the town of Banlung, hard against the Vietnam border. The table below details the concession.

Concession	Type	Area km ²	Issue Date
OYADAO SOUTH	Exploration Concession	248	2008-06- 12

As the company has done no excavating, or ground disturbance no environmental liability has been incurred. A liability to rehabilitate is incurred once ground disturbance commences, for example by pitting, trenching or diamond drilling. The company has initiated a strict internal policy of site rehabilitation. It is to be noted, however, that illegal mining in the Phum Syarung prospect area has devastated the landscape over several square kilometers, and there is a particularly unpleasant environmental hazard associated with that area, as the illegals were using a copper plate amalgam scavenger to recover much of the gold from sluicing. The waste water, no doubt charged with mercury, was being discharged directly into creeks feeding the Dokyong River.

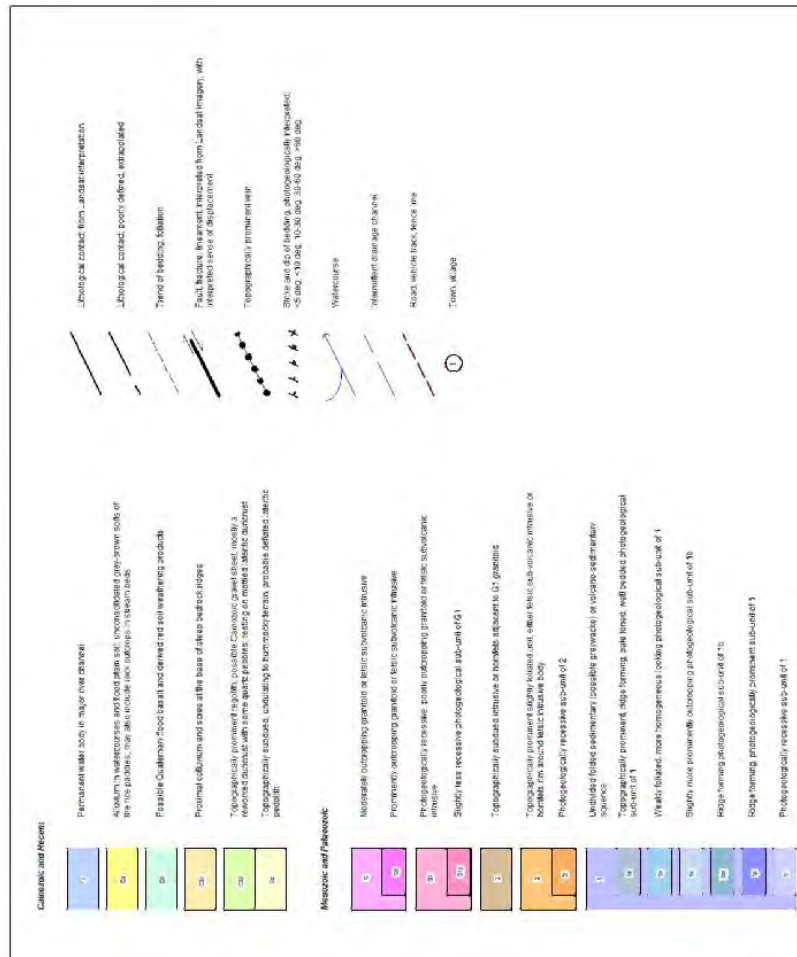
PREVIOUS WORK

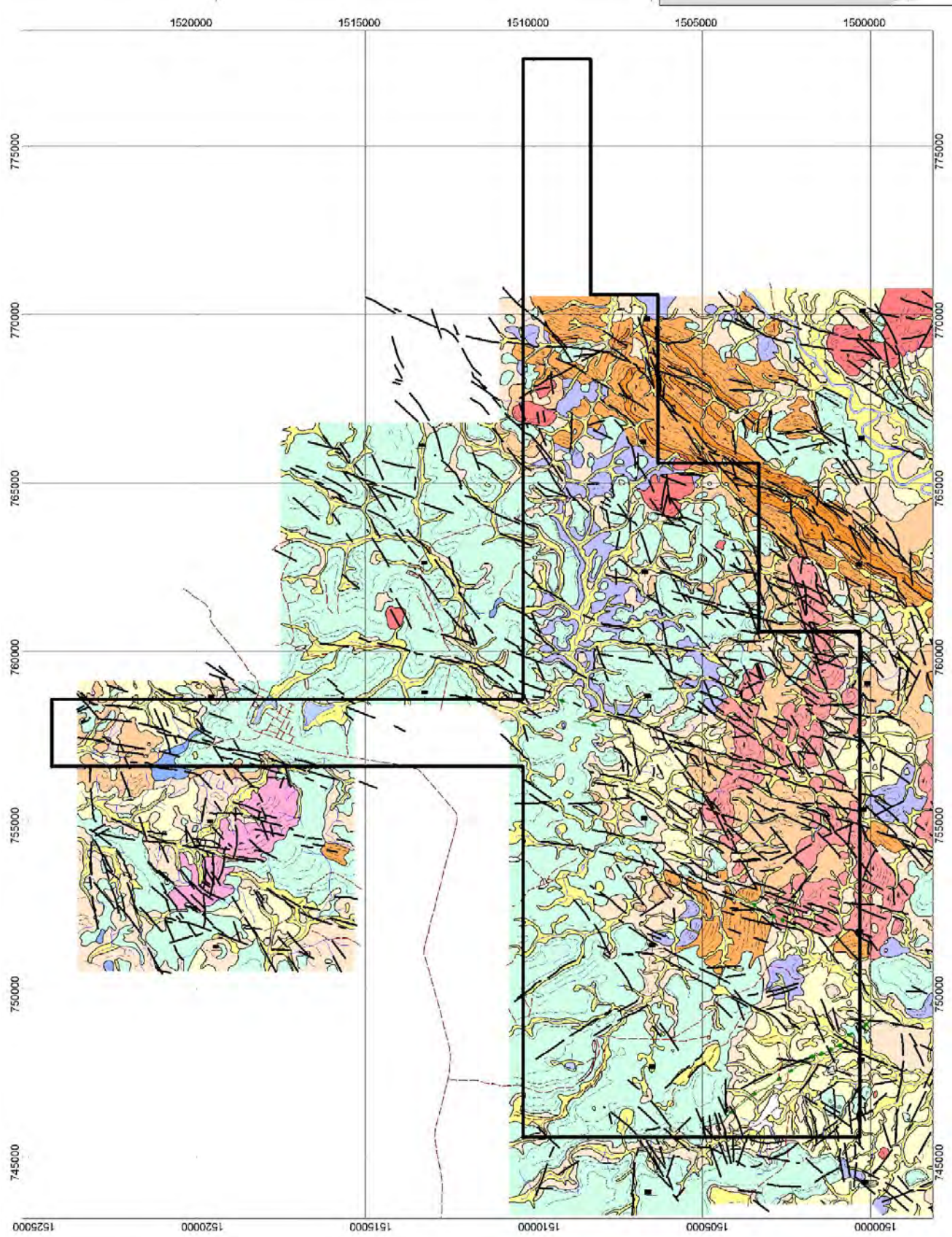
Reference should be made to previous semi-annual and annual reports by Prairie Pacific Mining Corporation and Liberty Mining International to the Ministry of Mines and Energy for the regional and local geology, geophysical framework and geochemical surveys on which the current programs are based. The map below, commissioned by Angkor in the previous semester, was drawn by Dr Lockett of Perth, Australia. It is an interpretation of the geology from air photographs, without ground "truthing" geological fact scouting.

**ANGKOR GOLD CORPORATION
Oyadao South Project**



DATUM WGS 84, PROJECTION UTM ZONE 48N





PROGRAM OF WORK

The following are the numeric statistics for the tenement for this semester:

Line cutting and clearing	23.3km	
Diamond drilling	0 holes	0m
Auger sampling	133 samples	
Rock samples	0 samples	
Trenches	0 trenches	0 metres
Pan concentrates	0 samples	
Stream sediment (<80#)	0 samples	

CURRENT OPERATIONS

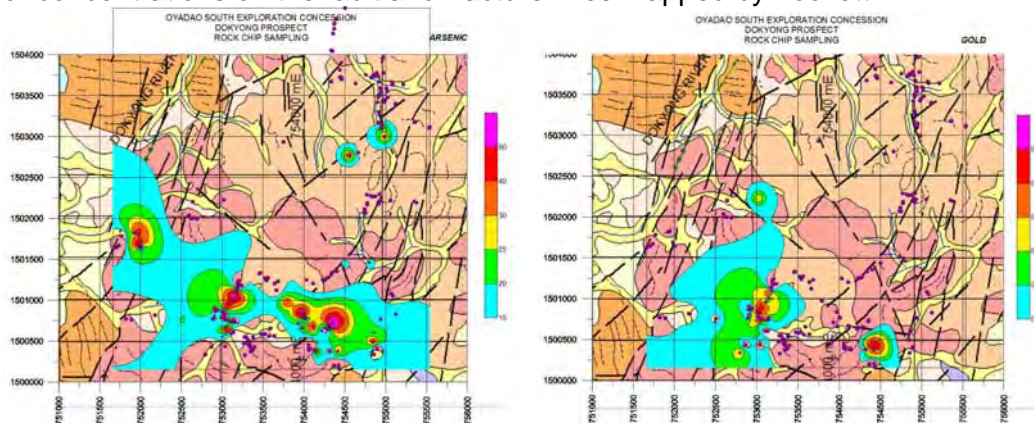
Oyadao South License

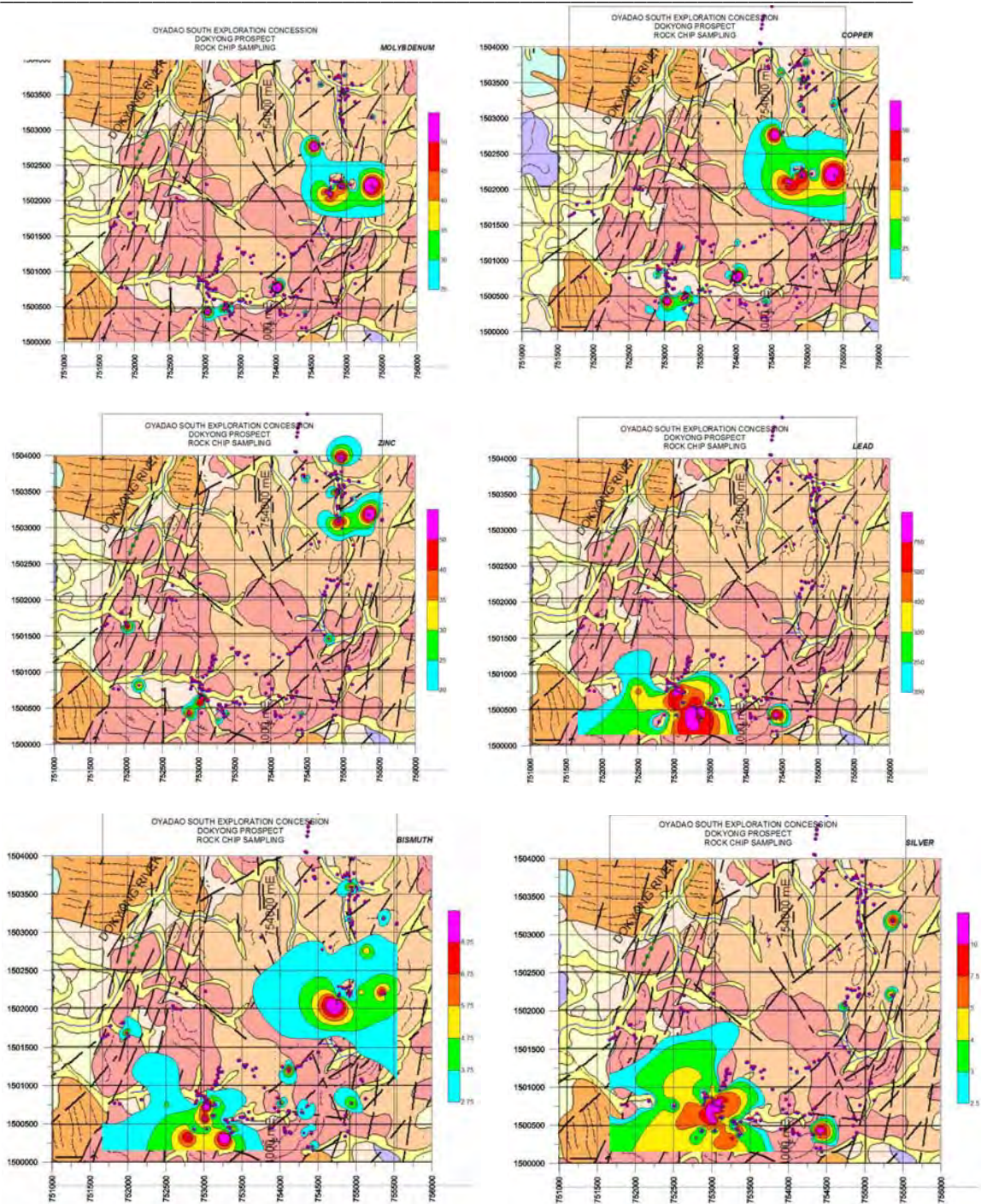
Located in the extreme southwest of the concession, in the most recently acquired block, the Dokyong area is promising. Reconnaissance mapping and sampling had already shown a great many workings following the Phum Syarung fault feature in the centre east of the concession, and sampling shows good gold values in several locations. Work at Phum Syarung was suspended after a short drill program last year, while effort was transferred to the southwest, where a lot of logistical work in camp setup, water access and creating access trails for moto traversing, constructing a helicopter landing pad for emergencies, and stream crossing groundwork has been done.

On an initial pass, the rock geochemistry seems very disappointing, as the few gold values are depressed. However, there is strong silicification throughout the area mapped and there is also evidence of leaching.

Closer examination of the rock geochemistry shows some interesting trends:

- Gold tracks with arsenic in the southwest, with the latter forming a tight crescent over a 4km front.
- Not surprisingly, copper and molybdenum distribution patterns are almost identical to each other. There is a centre of interest in the centre east.
- Not surprisingly, silver and lead track together, repeating the gold concentration of the southwest.
- Almost all elements, but particularly silver, bismuth and zinc, show a strong preference for concentrations on the fault and fracture lines mapped by Lockett.

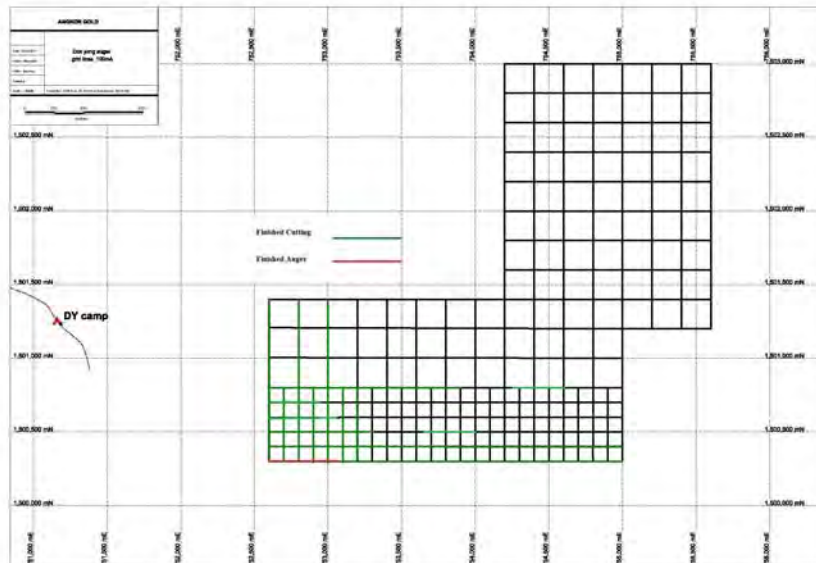




These distributions suggest that the prime target has to be in the southwest, associated with the northeast trending fractures. Further, that if there has been leaching, one can reasonably expect a barren surficial zone down as deep as 50m, perhaps even deeper. The corollary to such a leached surface zone in a harsh seasonal tropical environment is the possibility of a high grade supergene zone at the redox interface at the dry season nadir water table. Both the

barren zone and the supergene enrichment zones can be equally misleading in evaluation drilling.

The mapping and rock chip sampling proved very effective in outlining areas for further work, and line cutting commenced in early December on an extensive grid for 'C' zone soil sampling. Lines are cut at 100m intervals both east-west and north-south in the south, and at 200m intervals in the centre and north, and sampled at 25m intervals by auger to full resistance. The map below depicts the grid. Black lines are the proposed lines, green are already cut and red are sampled, at end December 2011.



All work is preceded by UXO clearance teams.

EXPENDITURES

These figures are preliminary, and have not yet been audited.

Salaries and Wages	\$51,048.41
Administration and General	\$56,755.21
Geological	\$72,290.01
Drilling	\$0.00
UXO & Earthworks	\$22,943.98
Assaying	\$23,488.69
Field Supplies	\$12,554.38
Accommodation, Meals	\$3,163.43
Vehicles, Transport, Fuel	\$10,202.40
Overheads	\$28,666.10
Total:	\$281,112.60

PROGRAM FOR THE NEXT SEMESTER

Regional

Geochemical Surveys

Parochial The auger sampling grid is a massive undertaking, and will occupy most of the dry season. In addition, a scout drilling program of 5-10 short (<150m) holes is planned for later in the season. This will concentrate on the silica flooded and clay alteration areas.

BUDGET FOR THE NEXT SEMESTER

	number	units	unit price	S1 - 2011
Oyadao South				
Grids	1	nominal	\$25,000.00	\$25,000
Augering	3600	spls	\$35.00	\$126,000
Drilling	300	m	\$175.00	\$52,500
TOTALS for next semester				\$203,500

Dr. Adrian Mann, Ph.D., M.B.A., B.Sc. (Hons), B.Sc. (Spec) (Hons), P. Geol.,
Vice President, Exploration